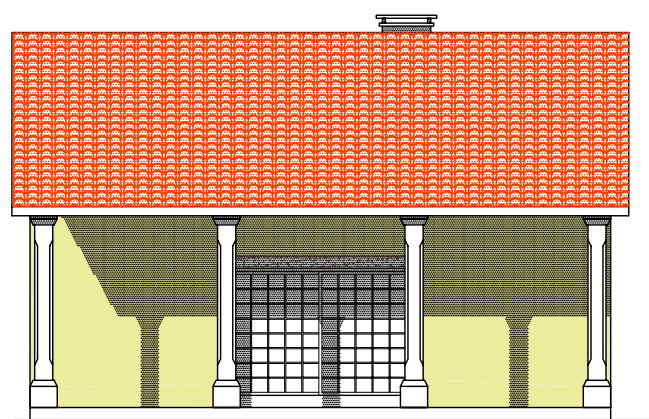
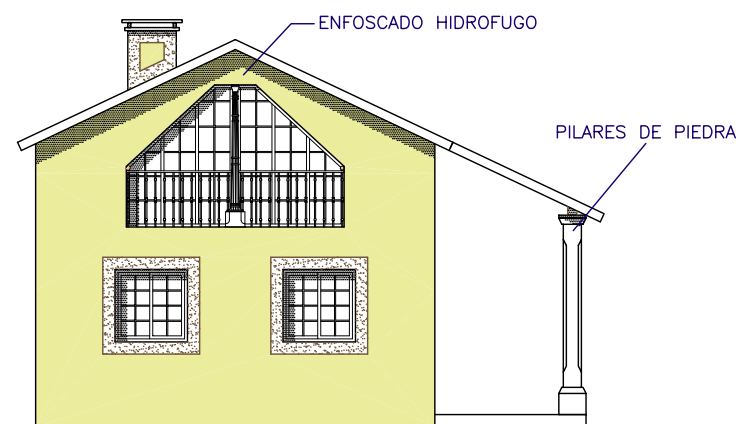


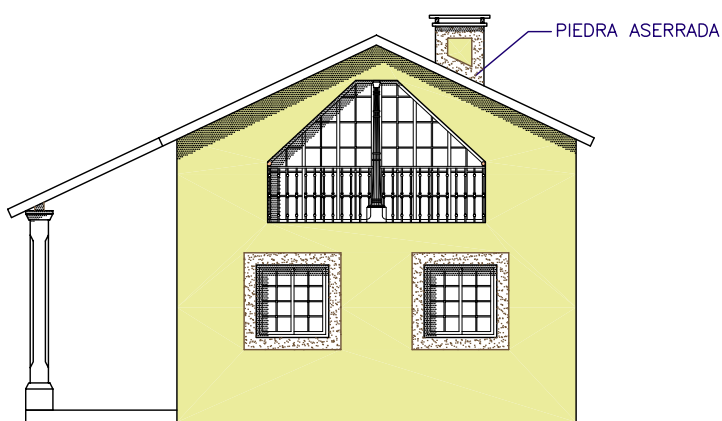
ALZADO NORTE



ALZADO SUR



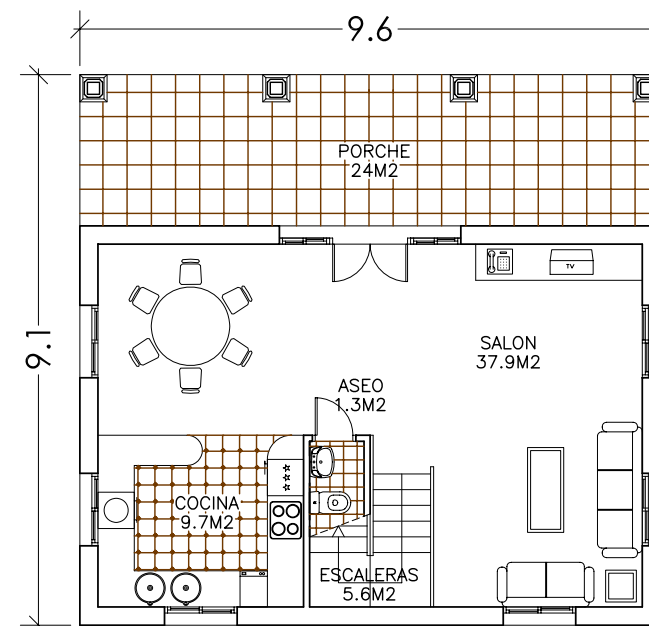
ALZADO ESTE



ALZADO OESTE

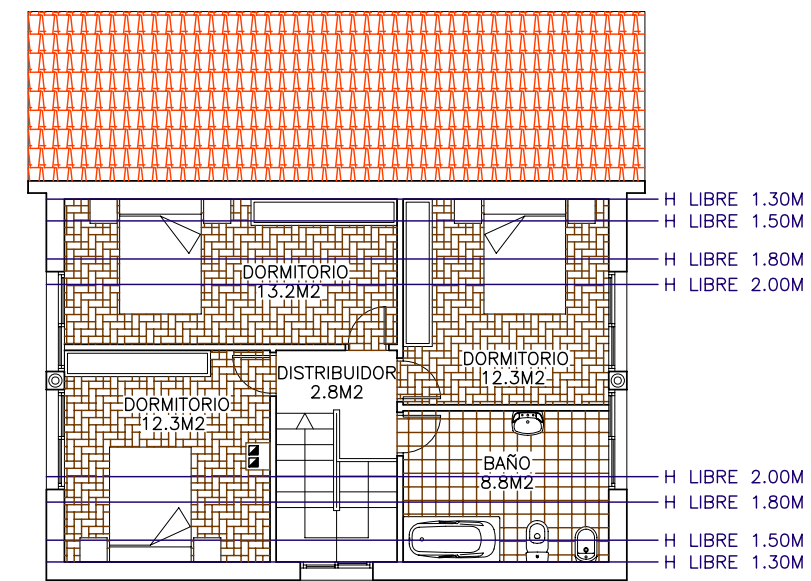
SUPERFICIES CONSTRUIDAS		
PLANTA BAJA:	VIVIENDA	64
	PORCHE	24
PL. BAJOCUBIERTA:	VIVIENDA	64
<b>TOTAL:</b>		<b>152</b>

ARQUITECTO: FERNANDO LOSADA LISTE



PLANTA BAJA

E 1:125 0 0.5 1 1.5 2 3 4 5 6 7 8 9 10 UNIDADES EN M



PLANTA BAJOCUBIERTA

H LIBRE 1.30M  
H LIBRE 1.50M  
H LIBRE 1.80M  
H LIBRE 2.00M  
H LIBRE 2.00M  
H LIBRE 1.80M  
H LIBRE 1.50M  
H LIBRE 1.30M

